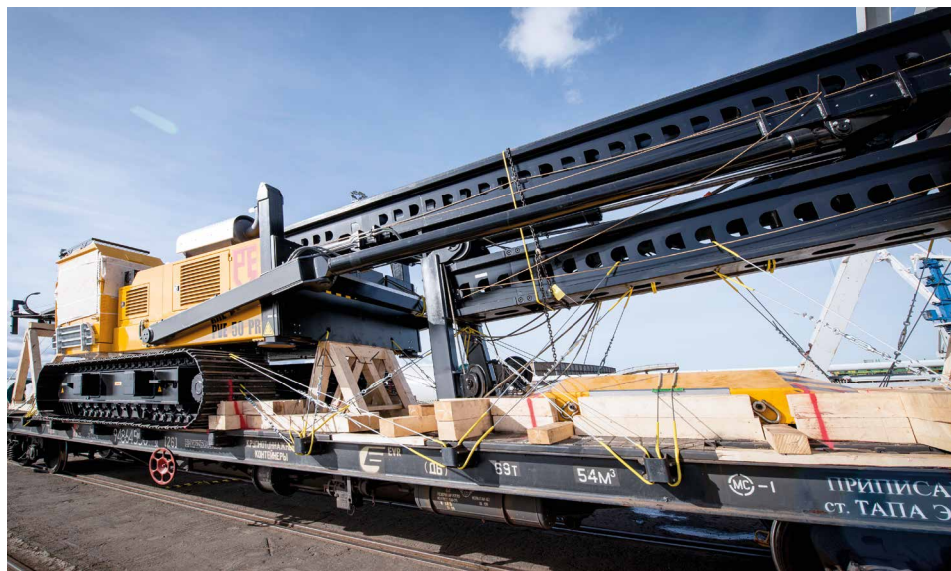


Private Rolling-Stock



Specialized boxcar / model 11-7038



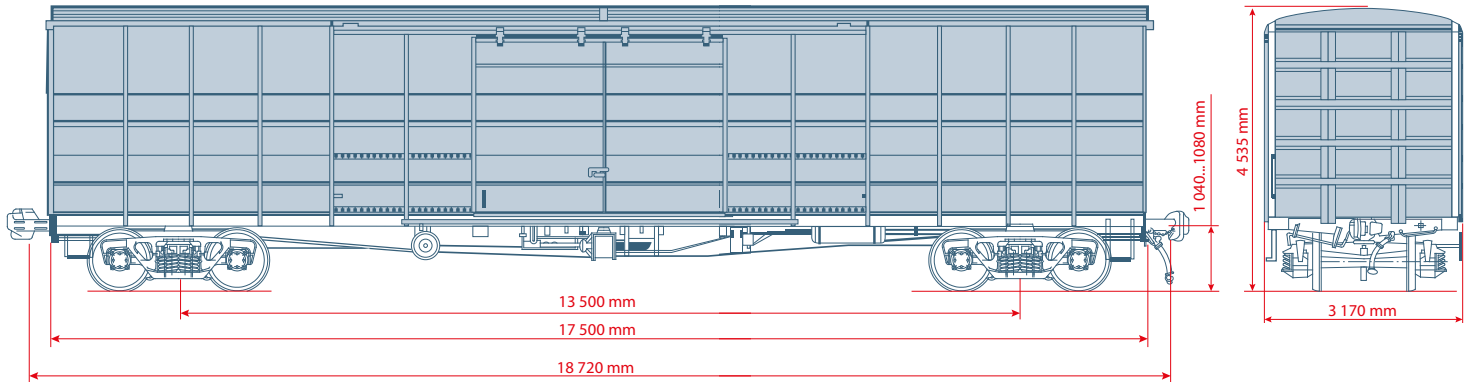
The boxcar model 11-7038 is more practical for transportation of light and volumetrical goods. Its capaciousness takes up to 25% more volume than the standard wagon.

The boxcar is intended for transportation of goods which require protection from atmospheric precipitation within the railway net of Ukraine, the CIS and Baltic states.

Transportation of:

- piece goods
- packaged/ palletized goods
- motor cars and minibuses
with the height not expanding 2,7 m

loading capacity, t	68
overall body volume, m³	161,6
effective body volume, m³	150,0
tare weight, t	25,0
calculated load from wheel set on rail, kN(tf)	230,3 (23,5)
length between wheel axles, mm	13 500
length between axles of automatic coupling, mm	18 720
external dimensions by GOST 9238-83	1-Т
coupling axis height from rail level, mm	1060±20
internal dimensions, mm	
— length	17 492
— width	2 790
— height	3 106
floor square, m²	48,8
side door dimension, mm	3 900x2 862



Special 80' (length 24 m) rail platforms with wooden floor / model 23-469-07



Transportation of:

- ISO containers
- long-length cargo
- wheeled/caterpillar and other machinery

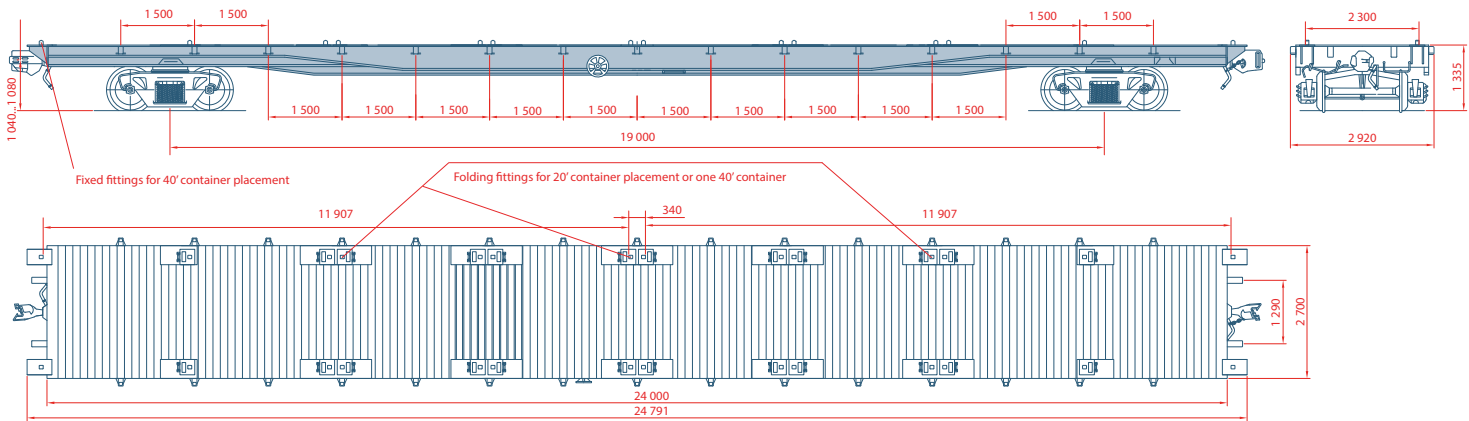
Platforms are specially equipped with:

- wooden floor
- 30 fixing points on sides
- 4 end holders on sides

Loading of containers on the platform:

- up to two 40' containers
- from one to three 20' containers

loading capacity, max, t	69
loading capacity for 2 x 40' cntrs., t	62
loading capacity for 2 x 20' cntrs., t	48
tare weight, t	25
external dimensions by GOST 9238-83	1-T
length between wheel axels, mm	19 000
length between axels of automatic coupling , mm	25 220
length between ending beams , mm	24 000
length between ending points, mm	24 791
width max, mm	2 700
height from rail track to floor level, mm	1 335
quantity of fixed fittings for cntrs, pcs	4
quantity of folding fittings for cntrs, pcs	28



Special 60' (length 18,4 m) rail platforms
with wooden floor / model 13-935A-04



Transportation of:

- ISO containers
- long-length cargo
- wheeled/caterpillar and other machinery

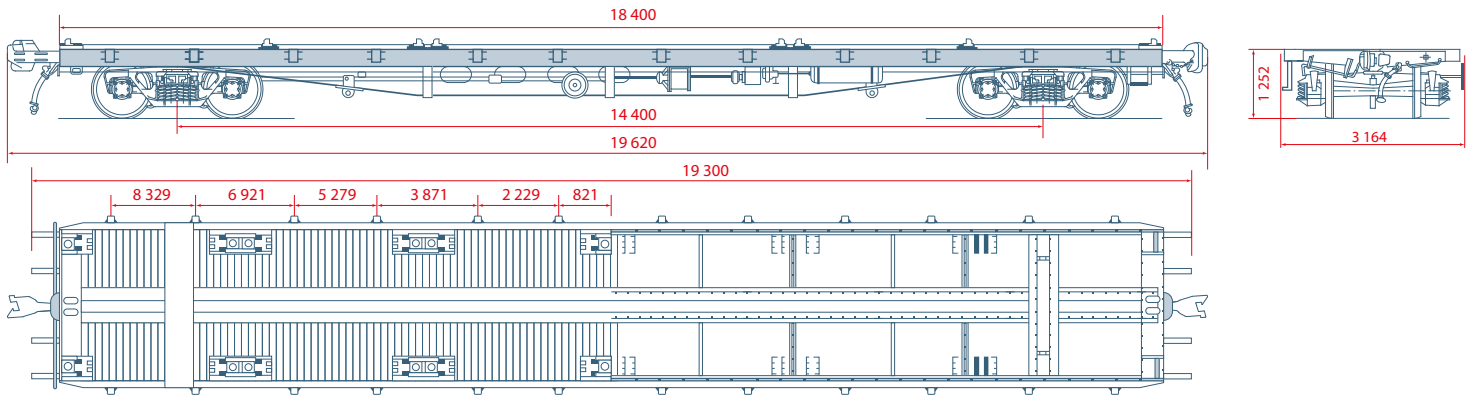
Platforms are specially equipped with:

- wooden floor
- 24 fixing points on sides (12 on each side)
- 4 end holders on sides

Loading of containers on the platform:

- up to one 40' containers
- from two to three 20' containers

loading capacity, max, t	69
number of fixing points, pcs	24
tare weight, t	25
length between wheel axels, mm	14 400
length between axels of automatic coupling , mm	19 620
length between ending beams , mm	18 400
static axle load , kN(kgF)	230,3 (23,5)
linear load kN/m(kgF/m)	46,95 (4,79)
width max, mm	3 164
height from rail track till floor level, mm	1 252
quantity of folding fittings for cntrs, pcs	24





ESTONIA

CF&S Estonia AS

Ahtri 12, 10151, Tallinn, Estonia
Phone +372 666 4400, Fax +372 666 4444
cfs@cfs.ee

FINLAND

CF&S Finland Oy

Rautatehtaankatu 8, 20200, Turku, Finland
Phone +358 4032 16511
cfs@cfs.fi

LATVIA

CF&S Latvia SIA

Ganibu dambis 24D, LV-1005, 6-floor office 617, Riga, Latvia
Phone +371 67 388 300, Fax +371 67 388 333
cfs@cfs.lv

LITHUANIA

Klaipeda / CF&S Lithuania UAB

Minijos 19, LT-91207, Klaipeda, Lithuania
Phone +370 46 310 458, Fax +370 46 210 193
cfs@cfs.lt

RUSSIA

Moscow / CF&S Russia Ltd

Varshavskoe Highway 1, building 6, office A-308 117015, Moscow, Russia
Phone +7 499 504 1505, Fax +7 499 504 1506
cfs@cfsrus.ru

St. Petersburg / CF&S Russia Ltd

6-th Krasnoarmeyskaya Street, 5-7A, 190005, St. Petersburg, Russia
Phone +7 812 309 9666, Fax +7 812 309 9166
cfs@cfsrus.ru

KAZAKHSTAN

CF&S Kazakhstan LLP

Tole Bi str. 69, office 37 (7th floor), 050 000, Almaty, Kazakhstan
Phone +7 727 237 83 20, Fax +7 727 237 83 19
info@cfs.kz

POLAND

CF&S Poland Sp. z o.o.

Piękna 24/26A, PL 00-549, Warsaw, Poland
Phone +48 22 300 52 40
cfs@cfs.pl